



Total Solution Provider in Saw Device

SL06506AV

65.8 MHz IF SAW Filter
6.60 MHz Bandwidth
Revision 0: 14. July. 2008



-
- Electrical Characteristics
 - Package Dimensions
 - Testing Environment
 - Frequency Characteristics
-

SAWNICS Inc.

460 Cheonheung-ri, Seonggeo-eup, Cheonan-si, Chungcheongnam-do, 330-836 / Korea.
Tel: +82 41 550 9372 / Fax: +82 41 550 9399 / www.sawnics.com

□ Electrical Characteristics

Maximum Ratings

Parameters Description	Unit	Minimum	Typical	Maximum
Operation Temperature Range	°C	15	25	35
Storage Temperature Range	°C	-40	-	85
Maximum DC Voltage	V	-	-	10
Maximum Input Power	dBm	-	-	10
Source Impedance (single ended) ⁽¹⁾	Ω	-	50	-
Load Impedance (single ended) ⁽¹⁾	Ω	-	50	-
Package type & size	V			
Length x Width	mm ²	-	13.3 x 6.5	-
Height	mm	-	-	1.8

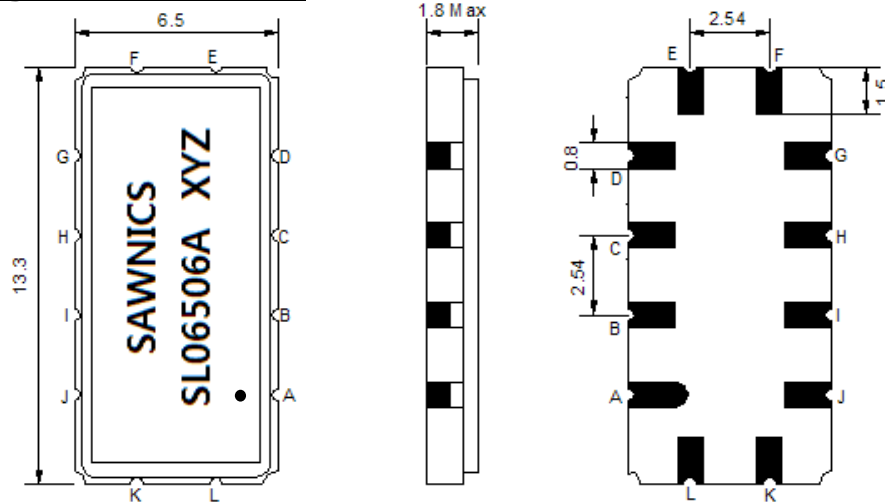
Electrical Specification

Parameters Description	Unit	Minimum	Typical	Maximum
Center Frequency (Fo)	MHz	65.7	65.8	65.9
Insertion Loss at Fo	dB	-	16.5	18.0
Group Delay Variation Fo±3.0MHz	nsec	-	50	100
Absolute Delay at Fo	usec	-	1.68	-
Passband Ripple Variation Fo±3.0MHz	dB	-	0.30	0.8
Bandwidth at -1dB	MHz	6.40	6.60	-
Bandwidth at -3dB	MHz	-	7.00	-
Bandwidth at -20dB	MHz	-	8.10	-
Bandwidth at -40dB	MHz	-	9.10	9.50
Relative Attenuation				
70.44MHz ~ 70.94MHz	dB	20	35	
Temperature Coefficient	ppm/°C	-	-18	-

Notes : (1) With Matching Network (Ref. Testing Environment Circuit as shown below).

Those impedances could be modified with different impedance values and/or structures, if necessary.

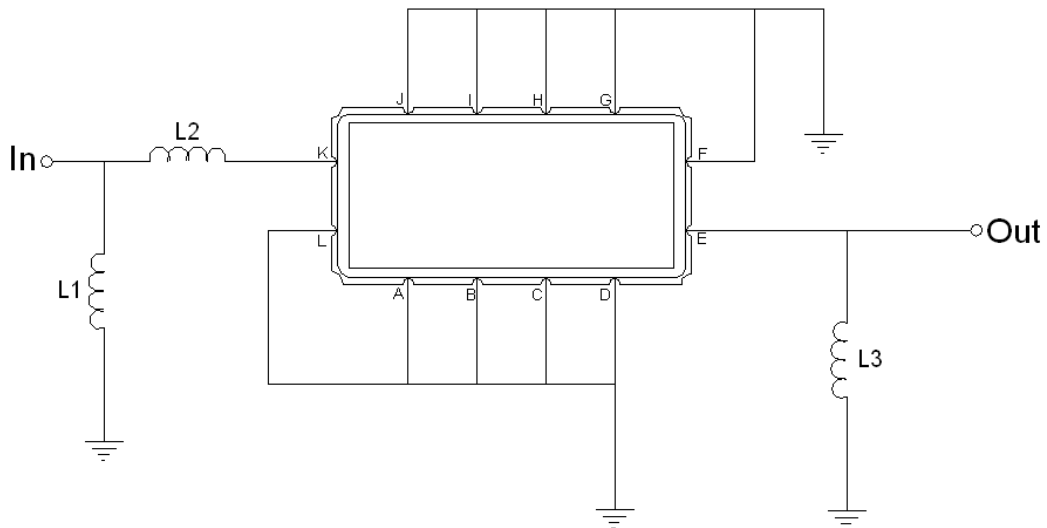
Package Dimensions



- ① SAWNICS: Brand
- ② SL06506A: Model Name
- ③ X : Date Code (Year)
- ④ Y : Date Code (Month)
- ⑤ Z : Date Code (Date)
- : Index Dot

Pin Description	
A, B, C, D, F, G, H, I, J, L	Ground
K	Input
E	Output

Testing Environment



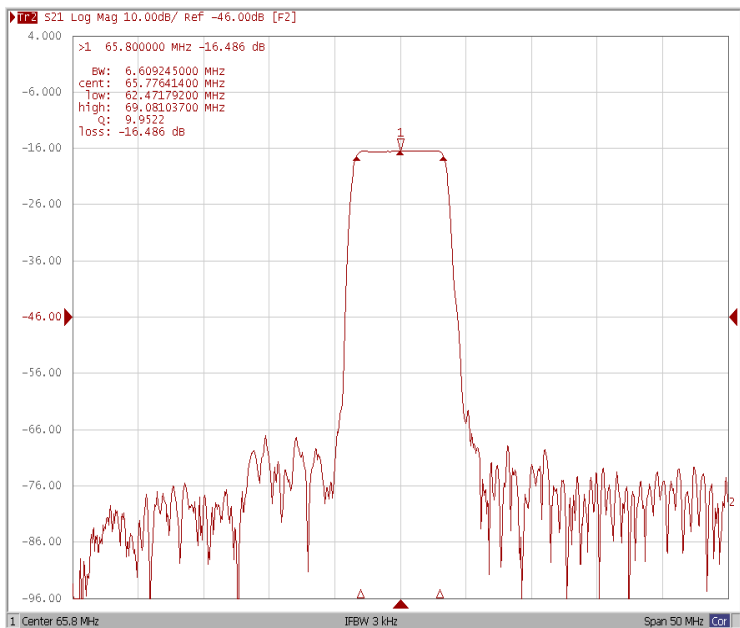
Test Fixture & Values	
Input	L1 = 39 nH , L2 = 6.8 nH
Output	L3 = 47 nH
Source/Load Impedance	50 Ω



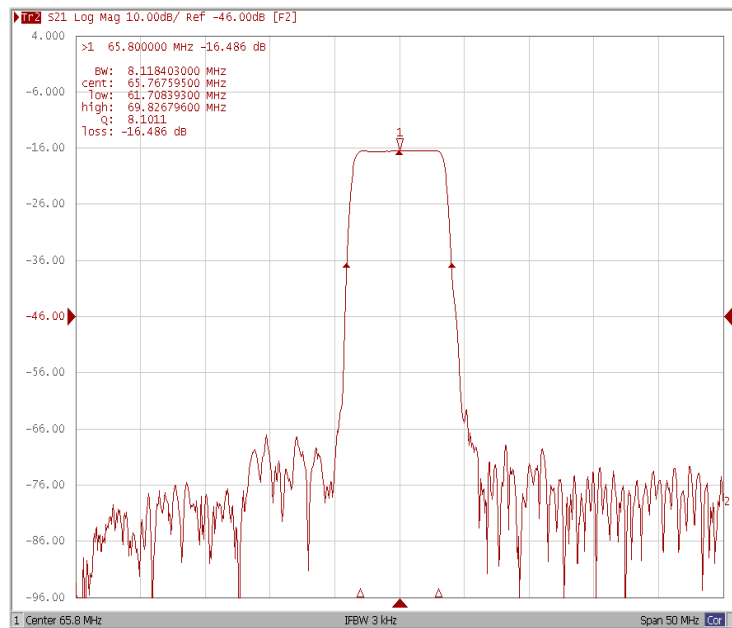
Frequency Characteristics

Frequency Response

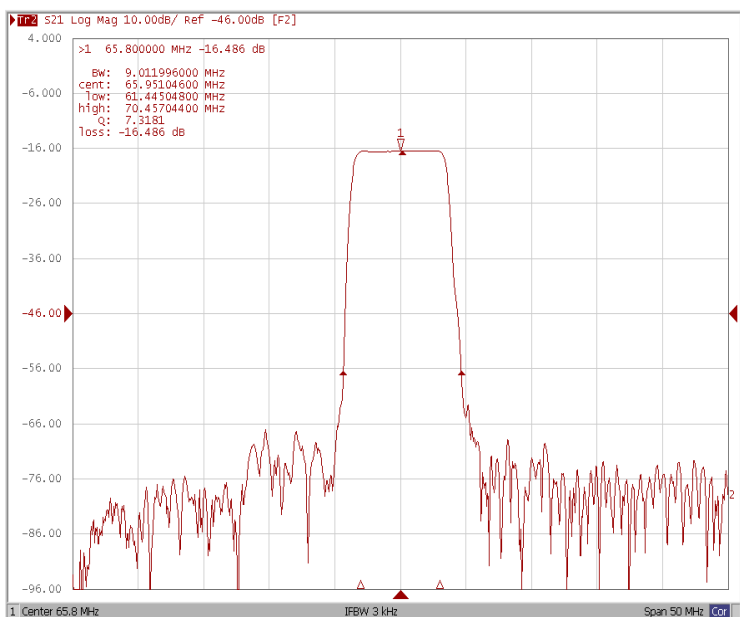
Bandwidth at -1.0 dB



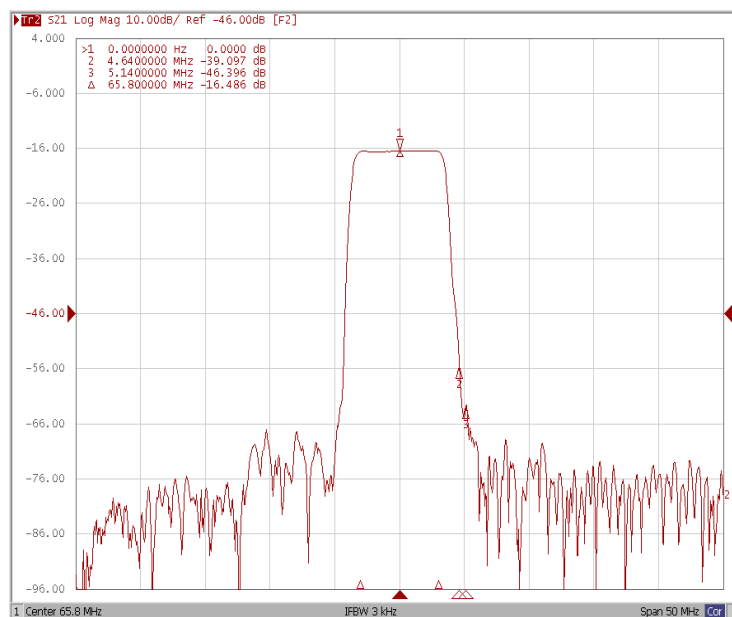
Bandwidth at -20.0 dB



Bandwidth at -40.0 dB



Attenuation (70.44 ~70.94MHz)

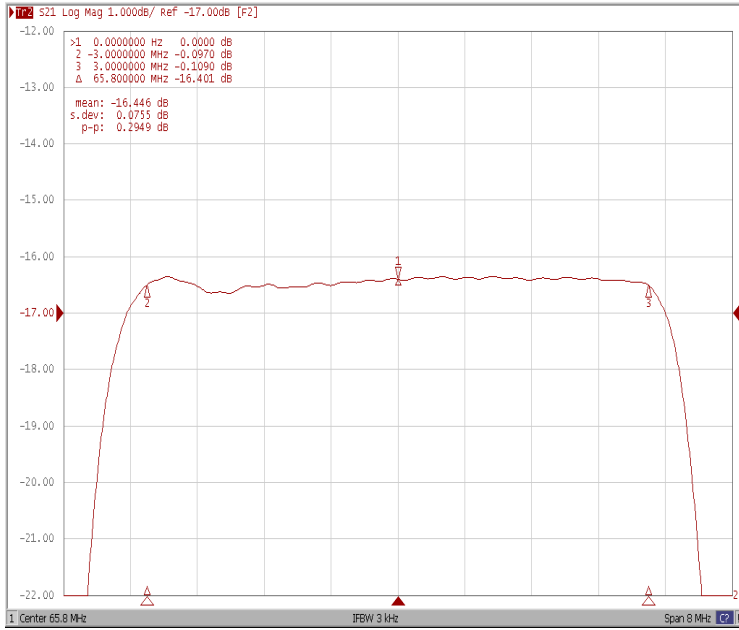




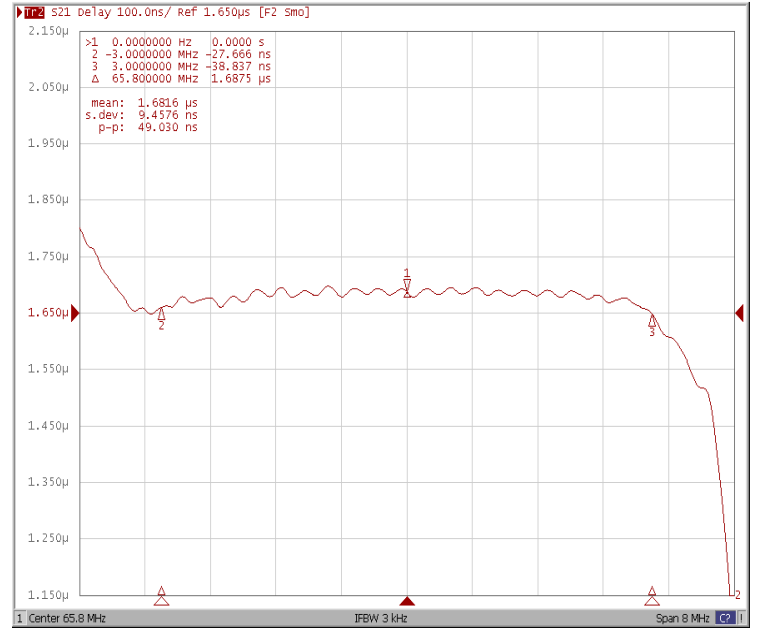
Frequency Characteristics

Frequency Response

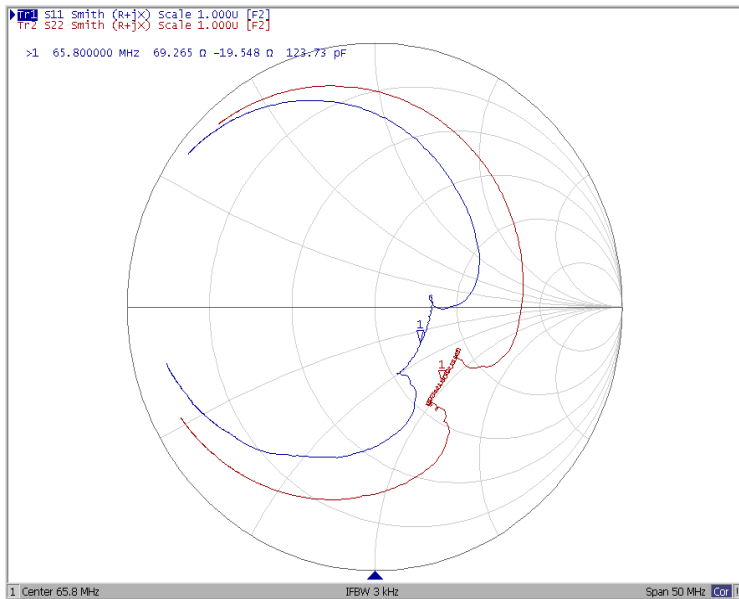
Ripple Variation Fo±3.0MHz



Group Delay Variation Fo±3.0MHz



Smith Chart



SWR

